

Özkar®



TAVAN TİPİ ODA SOUTUCULARI 2023



HAKKIMIZDA

1956 Yılında Mutlu Soğutma adı altında kurulan firmamız 1958 yılında Ariş Soğutma olarak iki yıl faaliyet göstermiş ve 1963 yılında Özkar Soğutma adı ile bugüne kadar başarılı ve istikrarlı bir grafik göstererek hizmet vermeye devam etmektedir.

2022 yılında Özkar Buzdolabı Soğutma ve Metal San. şirketimizin sektöründe ki bilgi ve birikimlerinden faydalanarak kısa sürede ısı değiştiriciler sektöründe kullanışlı ve kaliteli ürün imalatına başlamıştır.

Konya'da bulunan fabrikamızda :

- Ticari Kondenserler
- Kondenser Üniteleri
- Standart Oda Soğutucuları
- Tek ve Çift Taraf Üflemlili Oda Soğutucuları
- Vitrin Soğutucuları üretimleri yapılmaktadır.

Amacımız bu güne kadar vermiş olduğumuz başarı ve istikrarlı hizmet anlayışı ile sürekli en iyi destek ve hizmet vermektir.

Firmamız kalite ve hizmette en üst düzeyde , kalifiyeli eleman ve son sistem teknolojilerle müşteri memnuniyetini hedef almaktadır.

MİSYONUMUZ

Geniş ürün yelpazesi ile kaliteli ürünlerimizi en uygun fiyatlardan kullanıcı ile buluşturmak. Kullanıcı beklentisini en üst seviyede karşılamak.

VİZYONUMUZ

Dünyada artışı devam eden enerji fiyatlarını gözetip, verimi ve kalitesi en uygun ürünler üreterek, kullanıcıların her zaman memnuniyetini en üst seviyede tutmak.

Kaliteli , yenilikçi ve farklı ürün seçenekleri sunarak, sektörde sayılı üreticiler arasına girip ülke ekonomisine katkıda bulunmak.

ÇİFT TARAFLI ÜFLEME EVAPORATÖR

BATARYA ÖZELLİKLERİ

Ø3/8" Bakır boru kullanılmaktadır. Lamel araları 4-6 mm standartlanmıştır. Şaşırtmalı boru dizilimi. Çift taraflı üflemedir Maksimum çalışma basıncı 25 bar.

GÖVDE

Galvaniz çelik üzerine elektrostatik RAL 9016 boya kullanılmaktadır.

FAN

Ürünler Ø200, Ø250, Ø300, Fan seçeneklerinden soğutucuya en uygun olanı seçilerek belirlenmektedir. Fanlar IP44 ve IP54 koruma sınıfına sahiptir.

VERİM

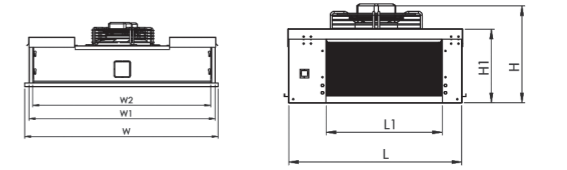
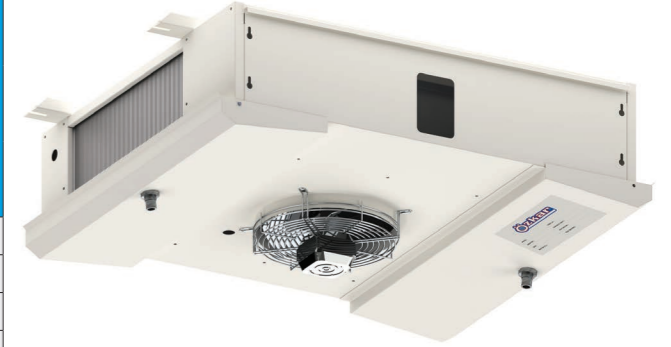
Nominal kapasiteler SC1 - SC2 koşullarında R404A gaza göre Eurovent (EN 328) standartlarına göre verilmiştir.

ÇİFT TARAFLI ÜFLEME EVAPORATÖR

1 FANLI 3/8 - 4 mm

Model Model	Yüzey Area	Boru Hacmi Tube Volume	Kapasite Capacity				Fanlar Fans 230V AC 1300-1400 d/d-rpm			Rezistanlar		
			SC1 10°C/0°C	SC2 0°C/- 8°C	SC3 - 18°C/ - 25°C	SC4 - 25°C/- 31°C	Adet Qty	Çap Diameter	Hava Debisi Air Flow	Batarya	Batarya	Tava
			W	W	W	W				AdetXboy	AdetXboy	AdetXboy
TC025 134	6,31	1,00	1866	1322	1034	-	1	250	888	4 x 250	-	-
TC025 144	8,41	1,20	2358	1660	1244	-	1	250	878	4 x 250	-	-
TC025 154	10,51	1,60	2714	1898	1374	-	1	250	868	4 x 250	-	-
TC025 164	12,59	1,80	2952	2058	1456	-	1	250	858	6 x 250	-	-
TC030 134	6,31	1,00	2266	1614	1270	-	1	300	1318	4 x 250	-	-
TC030 144	8,41	1,20	2924	2060	1548	-	1	300	1308	4 x 250	-	-
TC030 154	10,51	1,60	3382	2368	1702	-	1	300	1298	4 x 250	-	-
TC030 164	12,59	1,80	3704	2586	1790	-	1	300	1288	6 x 250	-	-
TC035 134	7,89	1,20	2326	2446	1866	-	1	350	2408	2 x 325	-	-
TC035 144	10,45	1,60	4294	3018	2102	-	1	350	2398	4 x 325	-	-
TC035 154	13,05	1,80	4946	3528	2796	-	1	350	2388	4 x 325	-	-
TC035 164	15,73	2,40	5930	4192	3198	-	1	350	2378	4 x 325	-	-
TC040 134	9,45	1,40	4268	3014	2160	-	1	400	3096	2 x 400	-	-
TC040 144	12,59	1,80	5280	3770	3016	-	1	400	3086	4 x 400	-	-
TC040 154	15,65	2,20	6312	4478	3448	-	1	400	3076	4 x 400	-	-
TC040 164	18,87	2,80	7416	5220	3790	-	1	400	3066	4 x 400	-	-

ÖLÇÜLER (DIAMENTER)							HATVE	FİYAT
L	W	H	L1	W1	W2	H1		
mm	mm	mm	mm	mm	mm	mm		
700	890	365	425	835	780	280	4	259E
700	890	365	425	835	780	280	4	290E
700	890	365	425	835	780	280	4	322E
700	890	365	425	835	780	280	4	354E
700	890	365	425	835	780	280	4	259E
700	890	365	425	835	780	280	4	290E
700	890	365	425	835	780	280	4	322E
700	890	365	425	835	780	280	4	354E
800	985	365	525	930	875	280	4	288E
800	985	365	525	930	875	280	4	326E
800	985	365	525	930	875	280	4	375E
800	985	365	525	930	875	280	4	422E
950	1035	365	675	980	925	280	4	326E
950	1035	365	675	980	925	280	4	391E
950	1035	365	675	980	925	280	4	424E
950	1035	365	675	980	925	280	4	479E



ÇİFT TARAFLI ÜFLEME EVAPORATÖR

2 FANLI 3/8 - 4 mm

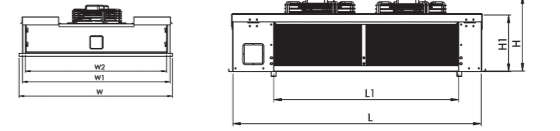
Model Model	Yüzey Area	Boru Hacmi Tube Volume	Kapasite Capacity				Fanlar Fans 230V AC 1300-1400 d/d-rpm			Rezistanlar		
			SC1 10°C/0°C	SC2 0°C/- 8°C	SC3 - 18°C/ - 25°C	SC4 - 25°C/- 31°C	Adet Qty	Çap Diameter	Hava Debisi Air Flow	Batarya	Batarya	Tava
			W	W	W	W				AdetXboy	AdetXboy	AdetXboy
TC025 234	12,57	2,00	3568	2050	2050	-	2	250	1782	4 x 400	-	-
TC025 244	16,77	2,40	4610	3288	2518	-	2	250	1678	4 x 400	-	-
TC025 254	20,97	3,20	5100	3638	2762	-	2	250	1550	6 x 400	-	-
TC025 264	25,13	3,60	5490	3948	3072	-	2	250	1520	6 x 400	-	-
TC030 234	12,57	2,00	5296	3788	3040	-	2	300	2896	4 x 500	-	-
TC030 244	16,77	2,40	4762	4762	3536	-	2	300	2720	4 x 500	-	-
TC030 254	20,97	3,20	7530	5382	4144	-	2	300	2572	4 x 500	-	-

ÖLÇÜLER (DIAMENTER)							HATVE	FİYAT
L	W	H	L1	W1	W2	H1		
mm	mm	mm	mm	mm	mm	mm		
1100	890	365	825	835	780	280	4	392E
1100	890	365	825	835	780	280	4	463E
1100	890	365	825	835	780	280	4	504E
1100	890	365	825	835	780	280	4	574E
1100	890	365	825	835	780	280	4	392E
1100	890	365	825	835	780	280	4	463E
1100	890	365	825	835	780	280	4	536E



TC030 264	25,13	3,60	8180	5852	4422	-	2	300	2446	6 x 500	-	-
TC035 234	15,73	2,40	6532	4912	3718	-	2	350	4536	4 x 500	-	-
TC035 244	20,85	3,20	8376	5892	4264	-	2	350	4406	4 x 500	-	-
TC035 254	26,05	3,60	9338	6742	5230	-	2	350	3868	6 x 500	-	-
TC035 264	31,41	4,80	10142	7292	4386	-	2	350	3834	6 x 500	-	-
TC040 234	18,85	2,80	8196	5860	4360	-	2	400	6022	4 x 650	-	-
TC040 244	25,13	3,60	10342	7462	5724	-	2	400	5548	4 x 650	-	-
TC040 254	31,25	4,40	11610	8352	6156	-	2	400	4986	4 x 650	-	-
TC040 264	37,69	5,60	12196	8856	6890	-	2	400	4330	6 x 650	-	-

1100	890	365	825	835	780	280	4	591E
1300	985	365	1025	930	875	280	4	449E
1300	985	365	1025	930	875	280	4	534E
1300	985	365	1025	930	875	280	4	619E
1300	985	365	1025	930	875	280	4	686E
1600	1035	365	1325	980	925	280	4	521E
1600	1035	365	1325	980	925	280	4	627E
1600	1035	365	1325	980	925	280	4	721E
1600	1035	365	1325	980	925	280	4	783E

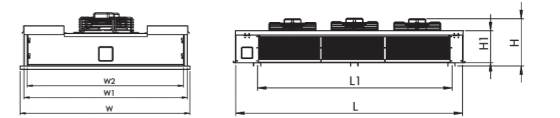
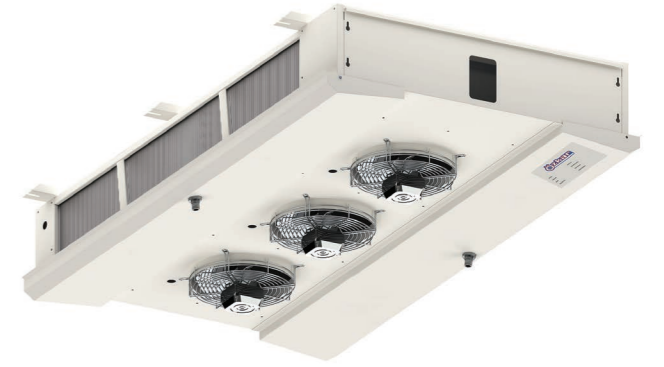


ÇİFT TARAFLI ÜFLEME EVAPORATÖR

3 FANLI 3/8 - 4 mm

Model Model	Yüzey Area m2	Boru Hacmi Tube Volume dm3	Kapasite Capacity				Fanlar Fans 230V AC 1300-1400 d/d-rpm			Rezistanslar		
			SC1 10°C/0°C	SC2 0°C/- 8°C	SC3 - 18°C/- 25°C	SC4 - 25°C/- 31°C	Adet Qty	Çap Diameter mm	Hava Debisi Air Flow m3/h	Batarya	Batarya	Tava
			W	W	W	W				AdetXboy	AdetXboy	AdetXboy
TC025 334	18,83	3,00	5734	4030	3048	-	3	250	2648	2 x 800	-	-
TC025 344	25,13	3,60	7154	5024	3822	-	3	250	2588	4 x 800	-	-
TC025 354	31,43	4,80	8804	6132	4426	-	3	250	2478	4 x 800	-	-
TC025 364	37,67	5,40	9356	6556	4818	-	3	250	2398	4 x 800	-	-
TC030 334	18,83	3,00	8230	5770	4094	-	3	300	4438	2 x 800	-	-
TC030 344	25,13	3,60	10268	7192	5296	-	3	300	4078	4 x 800	-	-
TC030 354	31,43	4,80	11228	7832	5560	-	3	300	3758	4 x 800	-	-
TC030 364	37,67	5,40	11704	8188	6010	-	3	300	3398	4 x 800	-	-
TC035 334	23,57	3,60	10262	7320	5668	-	3	350	6788	4 x 750	-	-
TC035 344	31,25	4,80	12602	8916	6898	-	3	350	6298	4 x 750	-	-
TC035 354	39,05	5,40	14526	10262	7932	-	3	350	5978	6 x 750	-	-
TC035 364	47,09	7,20	15696	11070	8548	-	3	350	5458	6 x 750	-	-
TC040 334	28,25	4,20	12940	9142	6692	-	3	400	8858	4 x 750	-	-
TC040 344	37,67	5,40	16032	11304	8320	-	3	400	8378	6 x 750	-	-
TC040 354	46,85	6,60	18476	13010	9626	-	3	400	7858	6 x 750	-	-
TC040 364	56,51	8,40	20288	14266	10692	-	3	400	7318	8 x 750	-	-

ÖLÇÜLER (DIAMENTER)							HATVE	FİYAT
L	W	H	L1	W1	W2	H1		
mm	mm	mm	mm	mm	mm	mm		
1500	890	365	1230	835	780	280	4	542E
1500	890	365	1230	835	780	280	4	660E
1500	890	365	1230	835	780	280	4	739E
1500	890	365	1230	835	780	280	4	798E
1500	890	365	1230	835	780	280	4	798E
1500	890	365	1230	835	780	280	4	542E
1500	890	365	1230	835	780	280	4	660E
1500	890	365	1230	835	780	280	4	739E
1500	890	365	1230	835	780	280	4	798E
1800	985	405	1530	930	875	320	4	675E
1800	985	405	1530	930	875	320	4	793E
1800	985	405	1530	930	875	320	4	914E
1800	985	405	1530	930	875	320	4	1.022E
2250	1035	405	1980	980	925	320	4	787E
2250	1035	405	1980	980	925	320	4	924E
2250	1035	405	1980	980	925	320	4	1.063E
2250	1035	405	1980	980	925	320	4	1.191E

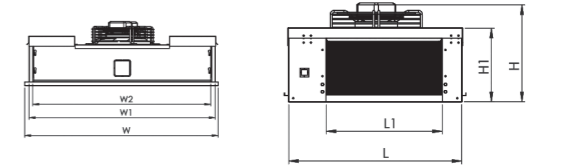
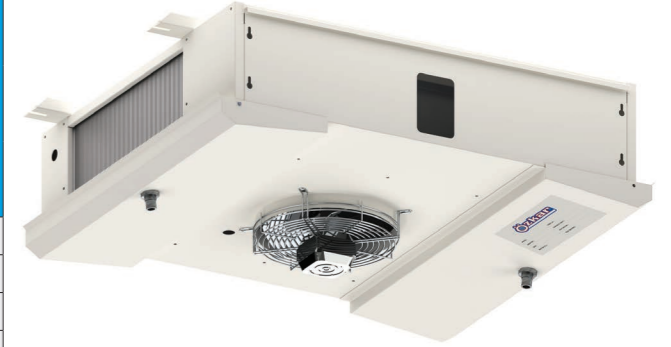


ÇİFT TARAFLI ÜFLEME EVAPORATÖR

1 FANLI 3/8 - 6mm

Model Model	Yüzey Area	Boru Hacmi Tube Volume	Kapasite Capacity				Fanlar Fans 230V AC 1300-1400 d/d-rpm			Rezistanlar		
			SC1 10°C/0°C	SC2 0°C/- 8°C	SC3 - 18°C/ - 25°C	SC4 - 25°C/- 31°C	Adet Qty	Çap Diameter	Hava Debisi Air Flow	Batarya	Batarya	Tava
			W	W	W	W				AdetXboy	AdetXboy	AdetXboy
TC025 136	4,37	1,00	1484	1048	800	-	1	250	928	2 x 250	4 x 250	4 x 250
TC025 146	5,83	1,20	1936	1360	1034	-	1	250	918	2 x 250	4 x 250	4 x 250
TC025 156	7,27	1,60	2302	1614	1184	-	1	250	908	4 x 250	6 x 250	4 x 250
TC025 166	8,71	1,80	2580	1798	1286	-	1	250	898	4 x 250	6 x 250	4 x 250
TC030 136	4,37	1,00	1818	1292	1030	-	1	300	1428	2 x 250	4 x 250	4 x 250
TC030 146	5,83	1,20	2408	1698	1292	-	1	300	1408	2 x 250	4 x 250	4 x 250
TC030 156	7,27	1,60	2878	2018	1480	-	1	300	1388	4 x 250	6 x 250	4 x 250
TC030 166	8,69	1,80	3226	2254	1596	-	1	300	1368	4 x 250	6 x 250	4 x 250
TC035 136	5,47	1,20	2742	1946	1512	-	1	350	2488	2 x 325	4 x 325	4 x 325
TC035 146	7,27	1,60	3590	2484	1816	-	1	350	2448	2 x 325	4 x 325	4 x 325
TC035 156	8,99	1,80	3924	2798	2246	-	1	350	2408	4 x 325	6 x 325	4 x 325
TC035 166	10,87	2,40	4790	3412	2614	-	1	350	2388	4 x 325	6 x 325	4 x 325
TC040 136	6,55	1,40	3472	2454	1840	-	1	400	3268	2 x 400	4 x 400	4 x 400
TC040 146	8,71	1,80	4170	2978	2402	-	1	400	3168	2 x 400	4 x 400	4 x 400
TC040 156	10,79	2,20	5100	3618	2826	-	1	400	3068	4 x 400	6 x 400	4 x 400
TC040 166	13,03	2,80	5982	4214	3170	-	1	400	2968	4 x 400	6 x 400	4 x 400

ÖLÇÜLER (DIAMENTER)							HATVE	FİYAT
L	W	H	L1	W1	W2	H1		
mm	mm	mm	mm	mm	mm	mm		
700	890	365	425	835	780	280	6	254E
700	890	365	425	835	780	280	6	284E
700	890	365	425	835	780	280	6	315E
700	890	365	425	835	780	280	6	345E
700	890	365	425	835	780	280	6	254E
700	890	365	425	835	780	280	6	284E
700	890	365	425	835	780	280	6	315E
700	890	365	425	835	780	280	6	345E
800	985	365	525	930	875	280	6	283E
800	985	365	525	930	875	280	6	318E
800	985	365	525	930	875	280	6	365E
800	985	365	525	930	875	280	6	411E
950	1035	365	675	980	925	280	6	319E
950	1035	365	675	980	925	280	6	382E
950	1035	365	675	980	925	280	6	412E
950	1035	365	675	980	925	280	6	465E



ÇİFT TARAFLI ÜFLEME EVAPORATÖR

2 FANLI 3/8 - 6mm

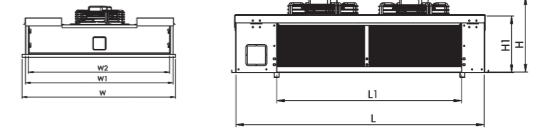
Model Model	Yüzey Area	Boru Hacmi Tube Volume	Kapasite Capacity				Fanlar Fans 230V AC 1300-1400 d/d-rpm			Rezistanlar		
			SC1 10°C/0°C	SC2 0°C/- 8°C	SC3 - 18°C/ - 25°C	SC4 - 25°C/- 31°C	Adet Qty	Çap Diameter	Hava Debisi Air Flow	Batarya	Batarya	Tava
			W	W	W	W				AdetXboy	AdetXboy	AdetXboy
TC025 236	8,71	2,00	3182	2192	1590	-	2	250	1804	2 x 400	4 x 400	4 x 400
TC025 246	11,59	2,40	3782	2678	2068	-	2	250	1746	4 x 400	6 x 400	4 x 400
TC025 256	14,37	3,20	4350	3084	2330	-	2	250	1682	4 x 400	6 x 400	4 x 400
TC025 266	17,37	3,60	4878	3458	2558	-	2	250	1618	4 x 400	8 x 400	4 x 400
TC030 236	8,71	2,00	3798	2686	2096	-	2	300	2874	2 x 500	4 x 500	4 x 500
TC030 246	11,59	2,40	4668	3326	2594	-	2	300	2638	2 x 500	4 x 500	4 x 500

ÖLÇÜLER (DIAMENTER)							HATVE	FİYAT
L	W	H	L1	W1	W2	H1		
mm	mm	mm	mm	mm	mm	mm		
1100	890	365	825	835	780	280	6	377E
1100	890	365	825	835	780	280	6	450E
1100	890	365	825	835	780	280	6	488E
1100	890	365	825	835	780	280	6	555E
1100	890	365	825	835	780	280	6	383E
1100	890	365	825	835	780	280	6	450E



TC030 256	14,37	3,20	5348	3812	2904	-	2	300	2480	4 x 500	6 x 500	4 x 500
TC030 266	17,37	3,60	6008	4276	3156	-	2	300	2342	4 x 500	6 x 500	4 x 500
TC035 236	10,75	2,40	5218	3748	3004	-	2	350	4984	2 x 500	4 x 500	4 x 500
TC035 246	14,47	3,20	6910	4934	3706	-	2	350	4586	4 x 500	6 x 500	4 x 500
TC035 256	18,07	3,60	7910	5688	4456	-	2	350	4256	4 x 500	6 x 500	4 x 500
TC035 266	21,69	4,80	8842	6354	4848	-	2	350	3958	4 x 500	8 x 500	4 x 500
TC040 236	12,89	2,80	6614	4734	3660	-	2	400	6412	2 x 650	4 x 650	4 x 650
TC040 246	17,37	3,60	8512	6096	4788	-	2	400	5934	4 x 650	4 x 650	4 x 650
TC040 256	21,69	4,40	9988	7168	5418	-	2	400	5550	4 x 650	6 x 650	4 x 650
TC040 266	26,01	5,60	10916	7838	5694	-	2	400	5114	4 x 650	6 x 650	4 x 650

1100	890	365	825	835	780	280	6	488E
1100	890	365	825	835	780	280	6	555E
1300	985	365	1025	930	875	280	6	437E
1300	985	365	1025	930	875	280	6	518E
1300	985	365	1025	930	875	280	6	600E
1300	985	365	1025	930	875	280	6	663E
1600	1035	365	1325	980	925	280	6	503E
1600	1035	365	1325	980	925	280	6	617E
1600	1035	365	1325	980	925	280	6	692E
1600	1035	365	1325	980	925	280	6	747E

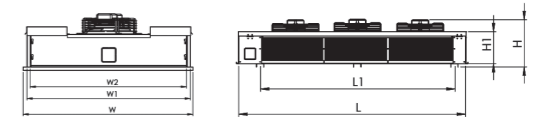


ÇİFT TARAFLI ÜFLEME EVAPORATÖR

3 FANLI 3/8 - 6mm

Model Model	Yüzey Area m2	Boru Hacmi Tube Volume dm3	Kapasite Capacity				Fanlar Fans 230V AC 1300-1400 d/d-rpm			Rezistanslar		
			SC1 10°C/0°C	SC2 0°C/- 8°C	SC3 - 18°C/ - 25°C	SC4 - 25°C/- 31°C	Adet Qty	Çap Diameter mm	Hava Debisi Air Flow m3/h	Batarya	Batarya	Tava
			W	W	W	W				AdetXboy	AdetXboy	AdetXboy
TC025 336	12,89	3,00	4546	3198	2438	-	3	250	2708	2 x 800	4 x 800	4 x 800
TC025 346	17,35	3,60	5948	4148	3020	-	3	250	2678	2 x 800	4 x 800	4 x 800
TC025 356	21,69	4,80	6954	4870	3630	-	3	250	2648	4 x 800	6 x 800	4 x 800
TC025 366	26,01	5,40	7826	5564	3976	-	3	250	2608	4 x 800	6 x 800	4 x 800
TC030 336	12,89	3,00	5612	3958	3038	-	3	300	4228	2 x 800	4 x 800	4 x 800
TC030 346	17,35	3,60	7390	5174	3722	-	3	300	4188	2 x 800	4 x 800	4 x 800
TC030 356	21,69	4,80	8846	6204	4634	-	3	300	4138	4 x 800	6 x 800	4 x 800
TC030 366	26,01	5,40	10028	7144	5074	-	3	300	4088	4 x 800	6 x 800	4 x 800
TC035 336	16,29	3,60	8256	5928	4666	-	3	350	7468	2 x 750	4 x 750	4 x 750
TC035 346	21,69	4,80	10916	7692	5662	-	3	350	7388	4 x 750	6 x 750	4 x 750
TC035 356	27,09	5,40	12766	9034	7092	-	3	350	7298	4 x 750	6 x 750	4 x 750
TC035 366	32,51	7,20	14662	10364	10364	-	3	350	7208	4 x 750	8 x 750	4 x 750
TC040 336	19,51	4,20	10536	7456	5676	-	3	400	9588	4 x 750	4 x 750	4 x 750
TC040 346	26,01	5,40	13490	9536	7258	-	3	400	9498	4 x 750	6 x 750	4 x 750
TC040 356	32,51	6,60	16184	11424	8650	-	3	400	9398	4 x 750	8 x 750	4 x 750
TC040 366	38,99	8,40	18628	13136	10004	-	3	400	9288	6 x 750	8 x 750	4 x 750

ÖLÇÜLER (DIAMETER)							HATVE	FİYAT
L	W	H	L1	W1	W2	H1		
mm	mm	mm	mm	mm	mm	mm		
1500	890	365	1230	835	780	280	6	528E
1500	890	365	1230	835	780	280	6	624E
1500	890	365	1230	835	780	280	6	716E
1500	890	365	1230	835	780	280	6	791E
1500	890	365	1230	835	780	280	6	528E
1500	890	365	1230	835	780	280	6	624E
1500	890	365	1230	835	780	280	6	716E
1500	890	365	1230	835	780	280	6	791E
1800	985	405	1530	930	875	320	6	658E
1800	985	405	1530	930	875	320	6	749E
1800	985	405	1530	930	875	320	6	885E
1800	985	405	1530	930	875	320	6	988E
2250	1035	405	1980	980	925	320	6	765E
2250	1035	405	1980	980	925	320	6	870E
2250	1035	405	1980	980	925	320	6	1.039E
2250	1035	405	1980	980	925	320	6	1.163E



TEK TARAFLI ÜFLEME EVAPORATÖR

BATARYA ÖZELLİKLERİ

Ø3/8" Bakır boru kullanılmaktadır. Lamel araları 4-6 mm standartlanmıştır. Şaşırtmalı boru dizilimi. Çift taraflı üflemedir Maksimum çalışma basıncı 25 bar.

GÖVDE

Galvaniz çelik üzerine elektrostatik RAL 9016 boya kullanılmaktadır.

FAN

Ürünler Ø200, Ø250, Ø300, Fan seçeneklerinden soğutucuya en uygun olanı seçilerek belirlenmektedir. Fanlar IP44 ve IP54 koruma sınıfına sahiptir.

VERİM

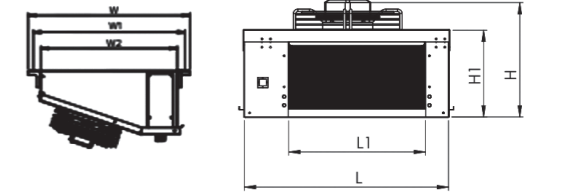
Nominal kapasiteler SC1 - SC2 koşullarında R404A gaza göre Eurovent (EN 328) standartlarına göre verilmiştir.

TEK TARAFLI ÜFLEME EVAPORATÖR

1 FANLI 3/8 - 4 mm

Model Model	Yüzey Area	Boru Hacmi Tube Volume	Kapasite Capacity				Fanlar Fans 230V AC 1300-1400 d/d-rpm			Rezistanslar		
			SC1 10°C/0°C	SC2 0°C/- 8°C	SC3 - 18°C/ - 25°C	SC4 - 25°C/- 31°C	Adet Qty	Çap Diameter	Hava Debisi Air Flow	Batarya	Batarya	Tava
			W	W	W	W				AdetXboy	AdetXboy	AdetXboy
TT025 134	4,05	0,60	1378	990	767	-	1	250	738	2 x 250	-	-
TT025 144	5,36	0,80	1617	1158	858	-	1	250	662	3 x 250	-	-
TT025 154	6,66	1,00	1741	1243	888	-	1	250	605	3 x 250	-	-
TT025 164	7,97	1,20	1905	1378	1081	-	1	250	565	4 x 250	-	-
TT030 134	4,05	0,60	1614	1164	900	-	1	300	841	2 x 250	-	-
TT030 144	5,36	0,80	1890	1356	978	-	1	300	821	3 x 250	-	-
TT030 154	6,66	1,00	2014	1446	994	-	1	300	777	3 x 250	-	-
TT030 164	7,97	1,20	2244	1640	1295	-	1	300	750	4 x 250	-	-
TT035 134	5,36	0,80	2235	1375	1372	-	1	350	1891	2 x 325	-	-
TT035 144	7,10	1,00	2835	2062	1645	-	1	350	1602	3 x 325	-	-
TT035 154	8,84	1,30	3186	2317	1792	-	1	350	1403	3 x 325	-	-
TT035 164	10,58	1,60	3399	2477	1985	-	1	350	1269	4 x 325	-	-
TT040 134	5,36	0,80	2317	1703	1438	-	1	400	2016	2 x 500	-	-
TT040 144	7,10	1,00	2955	2142	1706	-	1	400	1745	2 x 500	-	-
TT040 154	8,84	1,30	3415	2458	1868	-	1	400	1588	2 x 500	-	-
TT040 164	10,58	1,60	3697	2682	2143	-	1	400	1476	3 x 500	-	-

ÖLÇÜLER (DIAMENTER)							HATVE	FİYAT
L	W	H	L1	W1	W2	H1		
mm	mm	mm	mm	mm	mm	mm		
665	715	325	420	660	605	275	4	171E
665	715	325	420	660	605	275	4	190E
665	715	325	420	660	605	275	4	206E
665	715	325	420	660	605	275	4	233E
665	715	325	420	660	605	275	4	171E
665	715	325	420	660	605	275	4	190E
665	715	325	420	660	605	275	4	206E
665	715	325	420	660	605	275	4	233E
765	770	390	520	715	660	340	4	225E
765	770	390	520	715	660	340	4	249E
765	770	390	520	715	660	340	4	273E
765	770	390	520	715	660	340	4	301E
915	835	390	670	780	725	340	4	252E
915	835	390	670	780	725	340	4	273E
915	835	390	670	780	725	340	4	297E
915	835	390	670	780	725	340	4	325E



TEK TARAFLI ÜFLEME EVAPORATÖR

2 FANLI 3/8 - 4 mm

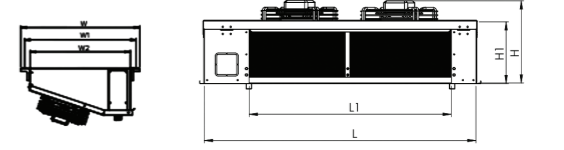
Model Model	Yüzey Area	Boru Hacmi Tube Volume	Kapasite Capacity				Fanlar Fans 230V AC 1300-1400 d/d-rpm			Rezistanslar		
			SC1 10°C/0°C	SC2 0°C/- 8°C	SC3 - 18°C/ - 25°C	SC4 - 25°C/- 31°C	Adet Qty	Çap Diameter	Hava Debisi Air Flow	Batarya	Batarya	Tava
			W	W	W	W				AdetXboy	AdetXboy	AdetXboy
TT025 234	7,91	1,20	2661	1918	1517	-	2	250	1470	2 x 500	-	-
TT025 244	10,59	1,60	3280	2351	1767	-	2	250	1318	3 x 500	-	-
TT025 254	13,19	2,00	3610	2603	2025	-	2	250	1208	3 x 500	-	-
TT025 264	15,81	2,40	3874	2787	2119	-	2	250	1125	4 x 500	-	-
TT030 234	7,97	1,20	3118	2257	1788	-	2	300	2102	2 x 650	-	-
TT030 244	10,59	1,60	3856	2769	2033	-	2	300	1834	2 x 650	-	-

ÖLÇÜLER (DIAMENTER)							HATVE	FİYAT
L	W	H	L1	W1	W2	H1		
mm	mm	mm	mm	mm	mm	mm		
1065	715	325	820	660	605	275	4	254E
1065	715	325	820	660	605	275	4	294E
1065	715	325	820	660	605	275	4	332E
1065	715	325	820	660	605	275	4	363E
1065	715	325	820	660	605	275	4	254E
1065	715	325	820	660	605	275	4	294E



TT030 254	13,19	2,00	4277	3105	2426	-	2	300	1648	3 x 650	-	-
TT030 264	15,81	2,40	4562	3308	2527	-	2	300	1495	3 x 650	-	-
TT035 234	10,59	1,60	4784	3470	2789	-	2	350	3632	2 x 750	-	-
TT035 244	14,07	2,00	5738	4150	3130	-	2	350	3199	2 x 750	-	-
TT035 254	17,55	2,60	6454	4699	3685	-	2	350	2800	3 x 750	-	-
TT035 264	21,03	3,20	6983	5029	3740	-	2	350	2527	3 x 750	-	-
TT040 234	10,59	1,60	4961	3610	2886	-	2	400	4002	2 x 750	-	-
TT040 244	14,07	2,00	5977	4302	3233	-	2	400	3478	2 x 750	-	-
TT040 254	17,55	2,60	6930	4994	3808	-	2	400	3171	3 x 750	-	-
TT040 264	21,03	3,20	7573	5436	3991	-	2	400	2941	3 x 750	-	-

1065	715	325	820	660	605	275	4	332E
1065	715	325	820	660	605	275	4	363E
1265	770	390	1020	715	660	340	4	337E
1265	770	390	1020	715	660	340	4	370E
1265	770	390	1020	715	660	340	4	430E
1265	770	390	1020	715	660	340	4	473E
1565	835	390	1320	780	725	340	4	370E
1565	835	390	1320	780	725	340	4	406E
1565	835	390	1320	780	725	340	4	466E
1565	835	390	1320	780	725	340	4	508E

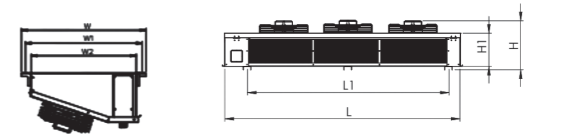


TEK TARAFLI ÜFLEME EVAPORATÖR

3 FANLI 3/8 - 4mm

Model Model	Yüzey Area	Boru Hacmi Tube Volume	Kapasite Capacity				Fanlar Fans 230V AC 1300-1400 d/d-rpm			Rezistanslar		
			SC1 10°C/0°C	SC2 0°C/- 8°C	SC3 - 18°C/ - 25°C	SC4 - 25°C/- 31°C	Adet Qty	Çap Diameter	Hava Debisi Air Flow	Batarya	Batarya	Tava
			W	W	W	W				AdetXboy	AdetXboy	AdetXboy
TT025 334	11,89	1,80	4172	2998	2356	-	3	250	2202	2 x 975	-	-
TT025 344	15,82	2,40	4944	3544	2678	-	3	250	1974	2 x 975	-	-
TT025 354	19,72	3,00	5369	3839	2806	-	3	250	1804	3 x 975	-	-
TT025 364	23,65	3,60	5685	4083	3090	-	3	250	1684	3 x 975	-	-
TT030 334	11,89	1,80	4910	3544	2790	-	3	300	3141	2 x 1000	-	-
TT030 344	15,82	2,40	5823	4183	3091	-	3	300	2748	2 x 1000	-	-
TT030 354	19,72	3,00	6272	4514	3188	-	3	300	2469	2 x 1000	-	-
TT030 364	23,65	3,60	6656	4820	3639	-	3	300	2239	3 x 1000	-	-
TT035 334	15,82	2,40	7311	5285	4112	-	3	350	5438	2 x 1000	-	-
TT035 344	21,04	3,00	8614	6248	4874	-	3	350	4796	3 x 1000	-	-
TT035 354	26,26	3,90	9705	7030	5240	-	3	350	4190	3 x 1000	-	-
TT035 364	31,48	4,80	10538	7592	5699	-	3	350	3787	4 x 1000	-	-
TT040 334	15,82	2,40	7580	5497	4279	-	3	400	5991	2 x 1300	-	-
TT040 344	21,04	3,00	8979	6488	5048	-	3	400	5219	2 x 1300	-	-
TT040 354	26,26	3,90	10397	7457	5445	-	3	400	4749	3 x 1300	-	-
TT040 364	31,48	4,80	11440	8215	6069	-	3	400	4408	3 x 1300	-	-

ÖLÇÜLER (DIAMETER)							HATVE	FİYAT
L	W	H	L1	W1	W2	H1		
mm	mm	mm	mm	mm	mm	mm		
1465	715	365	1225	660	605	275	4	347E
1465	715	365	1225	660	605	275	4	397E
1465	715	365	1225	660	605	275	4	444E
1465	715	365	1225	660	605	275	4	473E
1465	715	365	1225	660	605	275	4	347E
1465	715	365	1225	660	605	275	4	397E
1465	715	365	1225	660	605	275	4	444E
1465	715	365	1225	660	605	275	4	473E
1765	770	430	1525	715	660	340	4	451E
1765	770	430	1525	715	660	340	4	511E
1765	770	430	1525	715	660	340	4	587E
1765	770	430	1525	715	660	340	4	653E
2215	835	430	1975	780	725	340	4	496E
2215	835	430	1975	780	725	340	4	556E
2215	835	430	1975	780	725	340	4	632E
2215	835	430	1975	780	725	340	4	699E

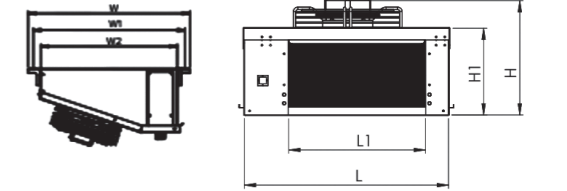


TEK TARAFLI ÜFLEME EVAPORATÖR

1 FANLI 3/8 - 6mm

Model Model	Yüzey Area	Boru Hacmi Tube Volume	Kapasite Capacity				Fanlar Fans 230V AC 1300-1400 d/d-rpm			Rezistanlar		
			SC1 10°C/0°C	SC2 0°C/- 8°C	SC3 - 18°C/ - 25°C	SC4 - 25°C/- 31°C	Adet Qty	Çap Diameter	Hava Debisi Air Flow	Batarya	Batarya	Tava
			W	W	W	W				AdetXboy	AdetXboy	AdetXboy
TT025 136	2,84	0,60	1120	802	624	-	1	250	793	2 x 250	3 x 250	2 x 250
TT025 146	3,74	0,80	1377	984	739	-	1	250	753	3 x 250	4 x 250	2 x 250
TT025 156	4,64	1,00	1537	1098	796	-	1	250	666	4 x 250	4 x 250	2 x 250
TT025 166	5,54	1,20	1661	1198	939	-	1	250	620	4 x 250	5 x 250	2 x 250
TT030 136	2,84	0,60	1316	946	743	-	1	300	1147	2 x 250	3 x 250	2 x 250
TT030 146	3,73	0,80	1615	1158	864	-	1	300	1026	3 x 250	4 x 250	2 x 250
TT030 156	4,64	1,00	1794	1283	920	-	1	300	924	4 x 250	4 x 250	2 x 250
TT030 166	5,54	1,20	1971	1434	1138	-	1	300	851	4 x 250	5 x 250	2 x 250
TT035 136	3,74	0,80	1957	1402	1010	-	1	350	2006	2 x 325	3 x 325	2 x 325
TT035 146	4,94	1,00	2343	1696	1365	-	1	350	1777	3 x 325	4 x 325	2 x 325
TT035 156	6,14	1,30	2764	1999	1553	-	1	350	1610	4 x 325	4 x 325	2 x 325
TT035 166	7,34	1,60	3020	2195	1664	-	1	350	1453	4 x 325	5 x 325	2 x 325
TT040 136	3,74	0,80	2034	1464	1049	-	1	400	2263	2 x 500	2 x 500	2 x 500
TT040 146	4,94	1,00	2432	1765	1431	-	1	400	1947	2 x 500	3 x 500	2 x 500
TT040 156	6,14	1,30	2884	2078	1611	-	1	400	1751	3 x 500	3 x 500	2 x 500
TT040 166	7,34	1,60	3224	2312	1729	-	1	400	1622	3 x 500	4 x 500	2 x 500

ÖLÇÜLER (DIAMENTER)							HATVE	FİYAT
L	W	H	L1	W1	W2	H1		
mm	mm	mm	mm	mm	mm	mm		
665	715	325	420	660	605	275	6	168₺
665	715	325	420	660	605	275	6	185₺
665	715	325	420	660	605	275	6	202₺
665	715	325	420	660	605	275	6	225₺
665	715	325	420	660	605	275	6	168₺
665	715	325	420	660	605	275	6	185₺
665	715	325	420	660	605	275	6	202₺
665	715	325	420	660	605	275	6	225₺
765	770	390	520	715	660	340	6	213₺
765	770	390	520	715	660	340	6	244₺
765	770	390	520	715	660	340	6	266₺
765	770	390	520	715	660	340	6	290₺
915	835	390	670	780	725	340	6	237₺
915	835	390	670	780	725	340	6	268₺
915	835	390	670	780	725	340	6	292₺
915	835	390	670	780	725	340	6	313₺



TEK TARAFLI ÜFLEME EVAPORATÖR

2 FANLI 3/8 - 6mm

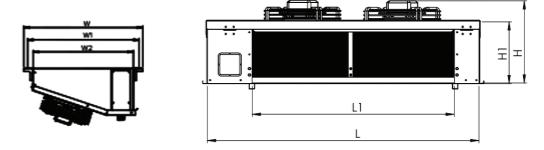
Model Model	Yüzey Area	Boru Hacmi Tube Volume	Kapasite Capacity				Fanlar Fans 230V AC 1300-1400 d/d-rpm			Rezistanlar		
			SC1 10°C/0°C	SC2 0°C/- 8°C	SC3 - 18°C/ - 25°C	SC4 - 25°C/- 31°C	Adet Qty	Çap Diameter	Hava Debisi Air Flow	Batarya	Batarya	Tava
			W	W	W	W				AdetXboy	AdetXboy	AdetXboy
TT025 236	5,48	1,20	2146	1540	1223	-	2	250	1580	2 x 500	3 x 500	2 x 500
TT025 246	7,34	1,60	2779	1987	1510	-	2	250	1443	3 x 500	4 x 500	2 x 500
TT025 256	9,09	2,00	3076	2196	1624	-	2	250	1326	4 x 500	4 x 500	2 x 500
TT025 266	10,95	2,40	3418	2458	1885	-	2	250	1231	4 x 500	5 x 500	2 x 500
TT030 236	5,48	1,20	2520	1815	1456	-	2	300	2285	2 x 650	2 x 650	2 x 650
TT030 246	7,34	1,60	3275	2352	1780	-	2	300	2047	2 x 650	3 x 650	2 x 650

ÖLÇÜLER (DIAMENTER)							HATVE	FİYAT
L	W	H	L1	W1	W2	H1		
mm	mm	mm	mm	mm	mm	mm		
1065	715	325	820	660	605	275	6	247₺
1065	715	325	820	660	605	275	6	285₺
1065	715	325	820	660	605	275	6	309₺
1065	715	325	820	660	605	275	6	351₺
1065	715	325	820	660	605	275	6	247₺
1065	715	325	820	660	605	275	6	285₺



TT030 256	9,09	2,00	3602	2582	1890	-	2	300	1845	3 x 650	3 x 650	2 x 650
TT030 266	10,95	2,40	4060	2936	2258	-	2	300	1694	3 x 650	4 x 650	2 x 650
TT035 236	7,35	1,60	3995	2867	2103	-	2	350	4150	2 x 750	3 x 750	2 x 750
TT035 246	9,75	2,00	4793	3453	2692	-	2	350	3538	3 x 750	3 x 750	2 x 750
TT035 256	12,15	2,60	5580	4038	3172	-	2	350	3214	3 x 750	4 x 750	2 x 750
TT035 266	14,55	3,20	3429	4455	3424	-	2	350	2900	4 x 750	5 x 750	2 x 750
TT040 236	7,35	1,60	4160	2998	2190	-	2	400	4520	2 x 750	3 x 750	2 x 750
TT040 246	9,75	2,00	4971	3592	2804	-	2	400	3882	3 x 750	3 x 750	2 x 750
TT040 256	12,15	2,60	5827	4201	3297	-	2	400	3497	3 x 750	4 x 750	2 x 750
TT040 266	14,55	3,20	6547	4971	3564	-	2	400	3238	4 x 750	5 x 750	2 x 750

1065	715	325	820	660	605	275	6	309£
1065	715	325	820	660	605	275	6	351£
1265	770	390	1020	715	660	340	6	323£
1265	770	390	1020	715	660	340	6	359£
1265	770	390	1020	715	660	340	6	416£
1265	770	390	1020	715	660	340	6	456£
1565	835	390	1320	780	725	340	6	359£
1565	835	390	1320	780	725	340	6	394£
1565	835	390	1320	780	725	340	6	449£
1565	835	390	1320	780	725	340	6	492£

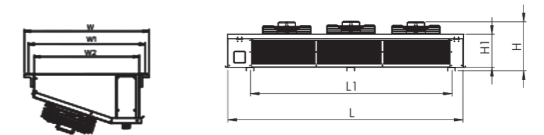


TEK TARAF LI ÜFLEME EVAPORATÖR

3 FAN LI 3/8 - 6mm

Model Model	Yüzey Area	Boru Hacmi Tube Volume	Kapasite Capacity				Fanlar Fans 230V AC 1300-1400 d/d-rpm			Rezistanlar		
			SC1 10°C/0°C	SC2 0°C/- 8°C	SC3 - 18°C/ - 25°C	SC4 - 25°C/- 31°C	Adet Qty	Çap Diameter	Hava Debisi Air Flow	Batarya	Batarya	Tava
			W	W	W	W				AdetXboy	AdetXboy	AdetXboy
TT025 336	8,26	1,80	3377	2416	1944	-	3	250	2367	2 x 975	2 x 975	2 x 975
TT025 346	10,96	2,40	4181	2990	2282	-	3	250	2162	2 x 975	3 x 975	2 x 975
TT025 356	13,66	3,00	4709	3367	2492	-	3	250	1986	3 x 975	3 x 975	2 x 975
TT025 366	16,36	3,60	5008	3597	2740	-	3	250	1849	3 x 975	4 x 975	2 x 975
TT030 336	8,26	1,80	3742	2713	2252	-	3	300	3437	2 x 1000	2 x 1000	2 x 1000
TT030 346	10,93	2,40	4812	3477	2772	-	3	300	3076	2 x 1000	3 x 1000	2 x 1000
TT030 356	13,66	3,00	5541	3966	2873	-	3	300	2756	3 x 1000	3 x 1000	2 x 1000
TT030 366	16,36	3,60	5924	4285	3260	-	3	300	2543	3 x 1000	4 x 1000	2 x 1000
TT035 336	10,96	2,40	5940	4292	3429	-	3	350	6006	2 x 1000	3 x 1000	2 x 1000
TT035 346	14,56	3,00	7381	5300	3959	-	3	350	5296	3 x 1000	4 x 1000	2 x 1000
TT035 356	18,16	3,90	8479	6114	4652	-	3	350	4811	4 x 1000	4 x 1000	2 x 1000
TT035 366	21,76	4,80	9225	6717	5187	-	3	350	4347	4 x 1000	5 x 1000	2 x 1000
TT040 336	10,96	2,40	6206	4506	3610	-	3	400	6797	2 x 1300	2 x 1300	2 x 1300
TT040 346	14,56	3,00	7647	5506	4110	-	3	400	5801	2 x 1300	3 x 1300	2 x 1300
TT040 356	18,16	3,90	8846	6353	4770	-	3	400	5233	3 x 1300	3 x 1300	2 x 1300
TT040 366	21,76	4,80	9873	7092	5404	-	3	400	4854	3 x 1300	4 x 1300	2 x 1300

ÖLÇÜLER (DIAMETER)							HATVE	FİYAT
L	W	H	L1	W1	W2	H1		
mm	mm	mm	mm	mm	mm	mm		
1465	715	365	1225	660	605	275	6	340£
1465	715	365	1225	660	605	275	6	385£
1465	715	365	1225	660	605	275	6	430£
1465	715	365	1225	660	605	275	6	454£
1465	715	365	1225	660	605	275	6	340£
1465	715	365	1225	660	605	275	6	385£
1465	715	365	1225	660	605	275	6	430£
1465	715	365	1225	660	605	275	6	454£
1765	770	430	1525	715	660	340	6	439£
1765	770	430	1525	715	660	340	6	494£
1765	770	430	1525	715	660	340	6	565£
1765	770	430	1525	715	660	340	6	630£
2215	835	430	1975	780	725	340	6	485£
2215	835	430	1975	780	725	340	6	539£
2215	835	430	1975	780	725	340	6	613£
2215	835	430	1975	780	725	340	6	675£





Tatlıcak Mah. Uzungeçit Sk. No:28 KONYA/TÜRKİYE
Tel: +90 552 502 94 42 · info@ozkarsogutma.com.tr

www.ozkarsogutma.com.tr